

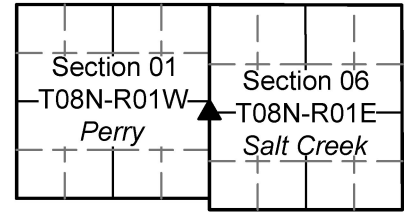
MONUMENT RECORD

Corner ID: **SaCr_A03**

West Quarter Corner

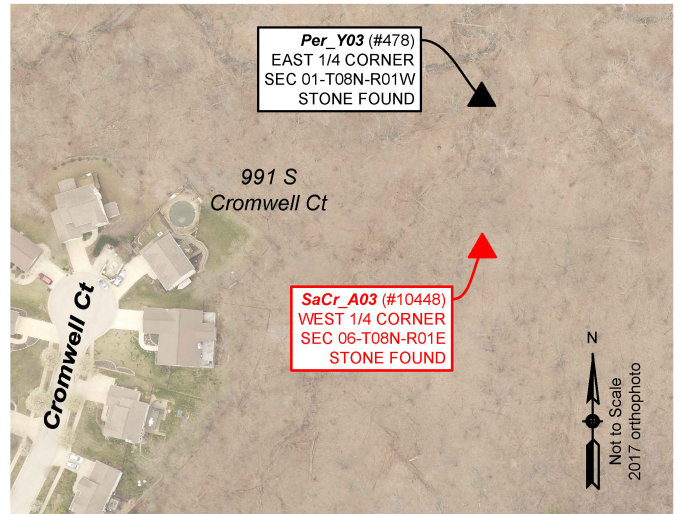
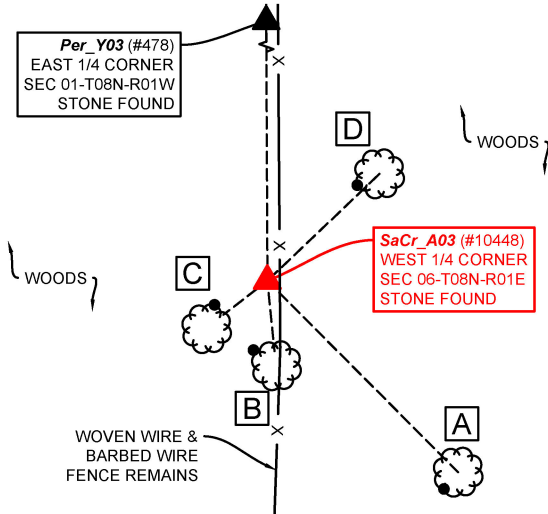
Section 6 - T08N-R01E, 2nd P.M.

Salt Creek Township, Monroe County, Indiana



MONUMENT: Describe monument set or found (Include material type, scribing, distance above/below grade, dimensions.)
 0.4'(w) x 0.95'(l) sandstone with cut "+" found 0.25' above grade.

MONUMENT LOCATION SKETCH:



WITNESS MONUMENT TIES

All ties to new Bearing Trees (BTs) are a mag nail set in a 1-1/2" plastic washer stamped "SURVEY MARKER - DO NOT REMOVE" and hack mark at the root crown (less than 12" above ground) perpendicular to the center of the tree, unless otherwise noted. BT diameters are noted as dbh and are measured approximately 4.5' above ground. Bearings are measured from the monument to the center of the BT, distances are measured from the monument to the mag nail.

ID	BEARING	DISTANCE	DESCRIPTION
Witness A	S 45d E	42.1'	Mag nail and washer set in hack 1.2' above grade on the southwest side of a 16" maple
Witness B	S 6d E	11.0'	Mag nail found 0.4' above grade in the northwest side of an 11" maple
Witness C	S 52d W	8.7'	Mag nail and washer found 0.8' above grade in the north side of a 12.5" maple
Witness D	N 46d E	24.2'	Mag nail and washer set in hack 0.85' above grade on the southwest side of a 14.5" maple

MONUMENT ACCESSORIES

Other survey grade monuments that were located in the vicinity and their relation to the monument.

(#10448)	N 0d15'9" W	157.19'	Sandstone with cut "+" found 0.8' above grade at the East 1/4 Corner of Section 1-T8N-R1W (Per_Y03)
----------	-------------	---------	---



MONUMENT RECORD

Corner ID: **SaCr_A03**

West Quarter Corner

Section 6 - T08N-R01E, 2nd P.M.

Salt Creek Township, Monroe County, Indiana

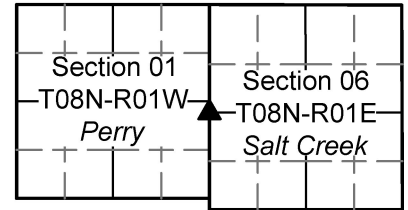


PHOTO IDENTIFIED: Photo Date: 11/19/2018



Photo Orientation & Description: SaCr_A03 from above



Photo Orientation & Description: Looking southeast at SaCr_A03



Photo Orientation & Description: Looking north at SaCr_A03



Photo Orientation & Description: Looking west at SaCr_A03

EXISTING SURVEY HISTORY Include as much detail and history of the corner as known at the time of perpetuation

ORIGINAL GOVERNMENT SURVEY: Not an original government corner

SUBSEQUENT CORNER RESTORATION:

Date Surveyed: 4/8/1858 By: James Spencer, MCS

Where filed or recorded: MCSO LSB2, pg 016

Original monument: "Established"

Bearing Trees or Reference Monuments:

Species	Dia.	Bearing	Distance
Beech	20"	S 61° W	25.74'
Lynn (tulip poplar)	10"	East	12.54'

SUBSEQUENT CORNER RESTORATION:

Date Surveyed: 12/14/1881 By: M. Buskirk, MCS

Where filed or recorded: MCSO LSB2, pg 352

Original monument: Point of commencement

Bearing Trees or Reference Monuments:

Species	Dia.	Bearing	Distance
Beech		S 66° W	26.4'
Beech	18"	S 19° W	15.84'

OTHER SURVEY HISTORY: Include details such as surveyor name, date, recording info, monument description, etc.

We assume that the stone was set by Monroe County Surveyor James Spencer when he established this corner in 1858. The stone was witnessed by Kevin Enright on August 4, 1999 and Steven Farkas on March 3, 2002, and it was accepted on every subsequent survey on file for this corner.

Date	RSID	Surveyor	Description	Source	Cabinet/Book	Pg	InstNo
5/4/2005	003241	Deckard, Eric Lee	Adam Dick Boundary Survey	Surveyor's Office	Township Drawers (Surveyor)		
2/7/2014	003233	Deckard, Eric Lee	Mackie Properties (Barnstone Trust) Boundary Survey	Recorder's Office	Filed digitally in the Recorder's Office		2014002669.IN



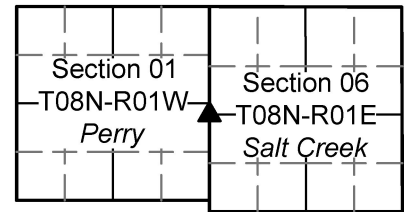
MONUMENT RECORD

Corner ID: **SaCr_A03**

West Quarter Corner

Section 6 - T08N-R01E, 2nd P.M.

Salt Creek Township, Monroe County, Indiana



1/28/2015	003234	Deckard, Eric Lee	Watts-Sartoris Type E Administrative Subdivision	Recorder's Office	Plat Cabinet D	139	2015002549.IN
7/23/2019	003210	Wilken, Andrew E.	Anne Grossman boundary survey	Recorder's Office	Filed digitally in the Recorder's Office		2019012603.IN

ORIGINAL OR SUBSEQUENT SURVEY EVIDENCE FOUND: *Include, search area or areas, search procedure, etc.*

Date of Field work/Search: 11/19/2019 *By:* RSO & CAR *Monument Found:* Stone *BTs or Reference Objects Found:* Found all witnesses from 1999 monument record. *Project #:* INDOT Network 2018 *Field Book:* 52/58 *Notes:* We tested the stone with hydrochloric acid and it did not react, so we classified it as sandstone.

OTHER EVIDENCE: *Describe corner location relative to nearby features and how to reach the corner location – note fences, roads, timber cutting lines, mow lines, clearings, plantings, streams, topo changes, etc.*

The stone is ~415 east of the Cromwell Court cul-de-sac, at the top of the east side of a steep ravine. The stone is approximately two feet west of woven wire and barbed wire fence remains.

MONUMENT PRESERVATION: *Describe work done to preserve existing monument.*

We set a “deep-one” magnet 0.3’ below grade on the west side of the stone and we set a five-foot t-post 0.65’ north of the stone with a Monroe County “PROTECT NEARBY SURVEY MARKER” sign set 2.6’ above grade, facing south.

THEORY OF LOCATION: *Describe the theory of location for acceptance of this monument. Include monument origin and associated uncertainty.*

The GLO plat depicts a distance of 39 chains along the east line of the Northeast ¼ of Sec.1-T8N-R1W and along the west line of the Northwest ¼ of Sec.6-T8N-R1E, which indicates that this should have been a common corner. If we disregard the GLO plat, the calculated distance for the closing corner based on the record falling to the south and the township corner to the north is 126.06 feet. We measured 157.19 feet between the two marked stones. There is also a significant discrepancy in the distance between Per_Y03 and the Township Corner. The GLO notes say 2574 feet and the 1839 legal survey says 2414.28 feet. We measured this distance as 2376.60 feet. We assume that the stone was set by Monroe County Surveyor James Spencer when he established this corner in 1858. We don’t have a good explanation for the large discrepancy between measured and record distances. Luckily, we don’t have any conflicting monuments either. We accepted the stone as the best evidence of the corner with no associated uncertainty.

GEODETIC COORDINATES: *Northing:* 1424362.0', *Easting:* 3128815.5'

BASIS OF GEODETIC COORDINATES: The basis of bearings is Grid North NAD83(2011), Indiana West Zone, Epoch 2010.0000, Geoid Model G2012BU7, Datum NAD83_NO_TRANS, US Survey Feet, derived from GPS observations utilizing the Indiana Real-Time Network (INCORS). Distances obtained with GPS have not been adjusted to ground. Coordinate data was collected with a Javad Triumph LS Network Rover. This document is not complete without the associated Corner Perpetuation plat and report of survey for Section 01-T8N-R1W by Rachel Oser of the Monroe County Surveyor's Office dated September 29, 2020 and recorded as Instrument Number 2020015915 in the office of the Monroe County Recorder.

CERTIFICATIONS:



Rachel Oser
 Date: 09/29/2020
 Rachel Oser, State of Indiana
 PS No.21100022



Trohn Enright-Randolph
 Date: 09/24/2020
 Trohn Enright-Randolph
 Monroe County Surveyor



Accepted by the Monroe
 County Surveyor Review
 Board on 09/24/2020

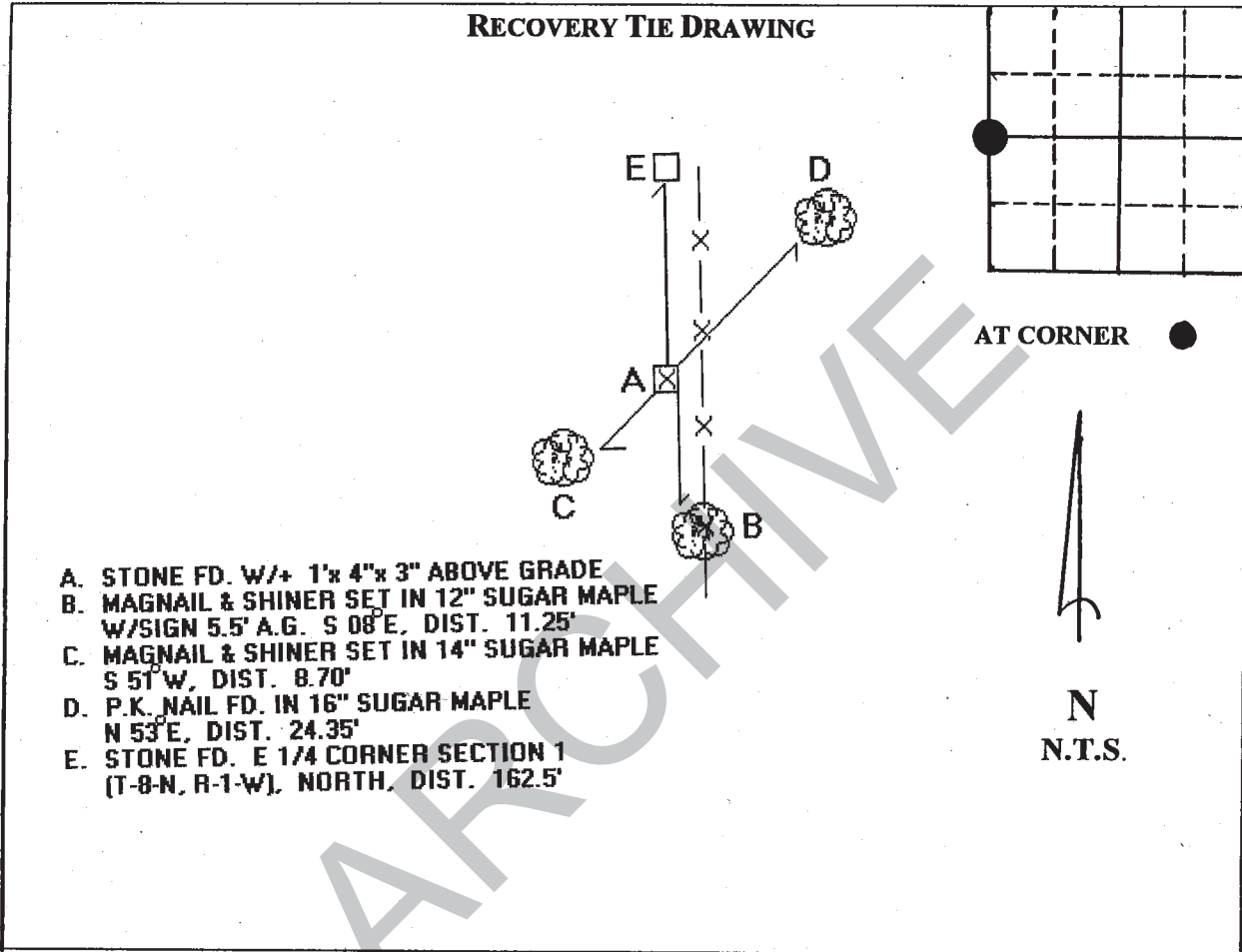


MONUMENT RECORD

STATE OF INDIANA ~ COUNTY OF MONROE

SECTION 6, TOWNSHIP 8 NORTH, RANGE 1 EAST

MONUMENT DESCRIPTION & REMARKS: 1' x 4" x 3" STONE FOUND WITH "+"
ABOVE GRADE MARKING THE WEST 1/4 OF SECTION 6.



STATE OF INDIANA
COUNTY OF MONROE

I, STEVEN V. FARKAS, HEREBY CERTIFY THAT THIS DOCUMENT WAS
PREPARED UNDER MY DIRECTION IN ACCORDANCE WITH THE PROVISIONS OF SECTION
17-3-64-4 THROUGH 17-3-64-8 OF THE INDIANA CODE, BEING ACTS OF 1965, CHAPTER 319;
AND THE ABOVE DATA IS GIVEN UNDER MY HAND AND SEAL
THIS 7th DAY OF MARCH, 2002 A.D.

INDIANA REGISTERED LAND SURVEYOR No. _____ OR

UNITED STATES GOVERNMENT AGENCY

TITLE

FIELD BOOK: 02-01

PAGE: 4

DRAFT #: 79

MONUMENT RECORD
State of Indiana - County of Monroe

SaCr_A03

Section: 01

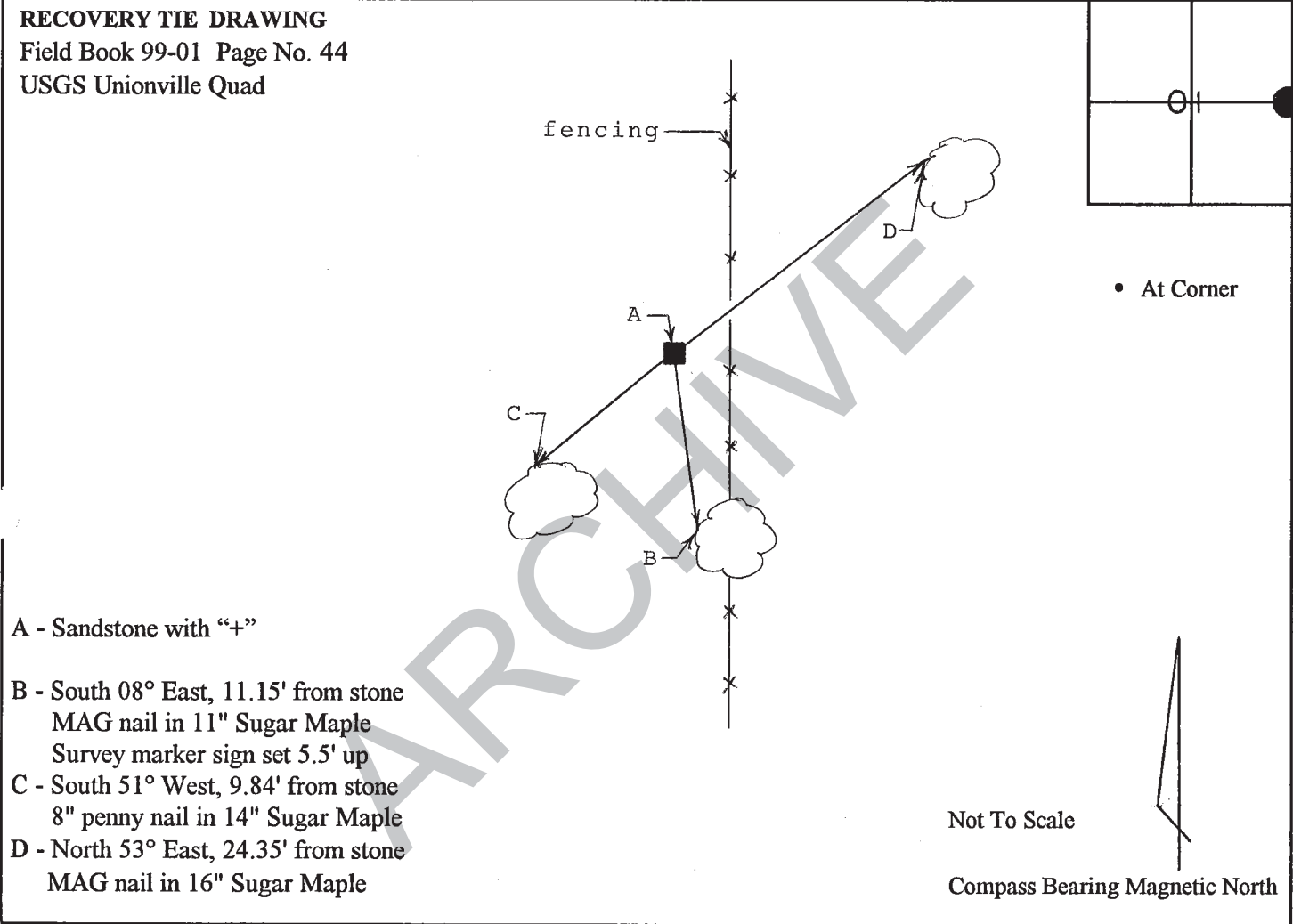
Township: 8 North

Range: 1 West

Corner ID: ~~Per Y-03~~

Monument Description & Remarks: Found flagged Sandstone with "+" at East ¼ corner of section. Stone was replanted with "+" facing up; new measurements 0.24' (h) x 0.95' (l) x 0.37' (w).

References On File: Smith Neubecker & Associates survey of Gentry East (Phase 1), dated April 7, 1997, on file in the County Surveyor's Office.



I, Kevin P. Enright, Monroe County Surveyor, hereby certify that this document was prepared under my direction in accordance with the provisions of Section 36-2-12-11 of the Indiana Code; and the above data is given under my hand and seal this 4th day of August, 1999.

Kevin P. Enright



Administered by the Monroe County Surveyor Review Board

Date:

10/21/99

